



SMART SOLUTIONS

COMMUNICATION AND WAYFINDING

DESIGN & SOLUTIONS - RELEASE 01



INDOOR SCREEN LED




FLIGHT	TO	SCHED.	CHK IN	REMARKS
OU 412	FRANKFURT	07:00	06:45	TAKE OFF 07:30
OU 320	BERLIN	07:30	07:15	CHECK IN OPEN
AL 7000	AMSTERDAM	08:20	08:05	CHECK IN OPEN
OU 960	COPENHAGEN	08:30	08:15	CHECK IN OPEN
OU 612	BRUXEL	08:30	08:15	CANCELLED
OU 4536	BRUXEL	08:30	08:15	CHECK IN OPEN
AC 9737	COPENHAGEN	08:40	08:25	CHECK IN OPEN
OU 412	FRANKFURT	08:50	08:35	CHECK IN OPEN
OU 215	COLOGNE	09:00	08:45	CHECK IN OPEN
OU 300	BRUXEL	09:00	08:45	CHECK IN OPEN
JU 231	BERLIN	10:00	09:45	CHECK IN OPEN
OU 2041	BRUXEL	11:00	10:45	CHECK IN OPEN
OU 604	DUBROVNIK	11:40	11:25	CHECK IN OPEN
OU 412	BRUXEL	11:40	11:25	CHECK IN OPEN
OU 441	LONDON	12:30	12:15	CHECK IN OPEN
OU 340	BRUXEL	12:30	12:15	CHECK IN OPEN
OU 873	COLOGNE	13:30	13:15	CHECK IN OPEN
OU 364	BRUXEL	14:15	14:00	CHECK IN OPEN
OU 440	LONDON	14:30	14:15	CHECK IN OPEN
OU 365	BRUXEL	14:30	14:15	CHECK IN OPEN
OU 4380	DUBROVNIK	14:50	14:35	CHECK IN OPEN
LH 1115	FRANKFURT	15:00	14:45	CHECK IN OPEN
OU 4406	BRUXEL	15:10	14:55	CHECK IN OPEN
OU 2077	BRUXEL	15:20	15:05	CHECK IN OPEN
OU 604	VIENNA	15:25	15:10	CHECK IN OPEN
OU 218	COLOGNE	15:35	15:20	CHECK IN OPEN
KL 1044	AMSTERDAM	16:55	16:40	CHECK IN OPEN
EA 4052	BRUXEL	16:55	16:40	CHECK IN OPEN
LH 1715	MUNICH	16:55	16:40	CHECK IN OPEN
AF 3561	PARIS CDG	17:30	17:15	CHECK IN OPEN
OU 442	VIENNA	17:50	17:35	CHECK IN OPEN
OU 412	FRANKFURT	18:00	17:45	CHECK IN OPEN
OU 436	MUNICH	18:20	18:05	CHECK IN OPEN
OU 1600	BRUXEL	18:30	18:15	CHECK IN OPEN
JU 235	BERLIN	20:40	20:25	CHECK IN OPEN

MEDIA CHROME 55"



INDOOR SCREEN LED WITH COVER



Departing To	Airline	Flight	Sched	Gate	Remark	Departing To	Airline	Flight	Sched	Gate	Remark	Departing To	Airline	Flight	Sched	Gate	Remark
Abu Dhabi	ETIHAD	150	1:05p		on time	Atlanta, GA	spirit	219	2:36p	L9	on time	Atlanta, GA	spirit	219	2:36p	L9	on time
Akron/Canton, OH	Delta	5306	1:25p	G3	at 3:03p	Atlanta, GA	DELTA	972	12:10p	E16	on time	Atlanta, GA	DELTA	972	12:10p	E16	on time
Akron/Canton, OH	Delta	3038	12:05p	L4	on time	Atlanta, GA	DELTA	2809	2:55p	E14	on time	Atlanta, GA	DELTA	2809	2:55p	E14	on time
Akron/Canton, OH	UNITED	4712	1:45p	B24	on time	Atlanta, GA	UNITED	1226	10:40a	B8	departed	Atlanta, GA	UNITED	1226	10:40a	B8	departed
Akron/Canton, OH	UNITED	4645	4:23p	C3	on time	Atlanta, GA	UNITED	5292	2:50p	E4	on time	Atlanta, GA	UNITED	5292	2:50p	E4	on time
Akron/Canton, OH	UNITED	3956	11:45a	F21	on time	Austin, TX	UNITED	1937	12:25p	C17	on time	Austin, TX	UNITED	1937	12:25p	C17	on time
Albany, NY	Delta	3661	12:30p	K2	on time	Austin, TX	Delta	1324	4:40p	K8	on time	Austin, TX	Delta	1324	4:40p	K8	on time
Albany, NY	UNITED	288	1:15p	B11	on time	Austin, TX	Delta	1344	10:16a	H6	departed	Austin, TX	Delta	1344	10:16a	H6	departed
Albuquerque, NM	Delta	3513	10:20a	L10C	departed	Baltimore/Washington	UNITED	3260	11:45a	G4	on time	Baltimore/Washington	UNITED	3260	11:45a	G4	on time
Allentown, PA	UNITED	4786	1:50p	B23	on time	Baltimore/Washington	UNITED	307	1:50p	C23	on time	Baltimore/Washington	UNITED	307	1:50p	C23	on time
Anchorage	UNITED	1280	4:09p	C22	on time	Beijing, China	UNITED	851	12:35p	C18	on time	Beijing, China	UNITED	851	12:35p	C18	on time
Appleton, WI	UNITED	4619	3:50p	B19	on time	Bentonville, AR	Delta	3311	5:10p	L10C	on time	Bentonville, AR	Delta	3311	5:10p	L10C	on time
Appleton, WI	UNITED	4775	12:15p	C5	on time	Bentonville, AR	UNITED	4692	12:25p	F27	on time	Bentonville, AR	UNITED	4692	12:25p	F27	on time
Asheville, NC	UNITED	5136	1:45p	F3	on time	Bentonville, AR	UNITED	4058	4:00p	F20	on time	Bentonville, AR	UNITED	4058	4:00p	F20	on time
Atlanta, GA	UNITED	5570	12:43p	B22	on time	Bentonville, AR	Delta	3638	1:30p	G7	on time	Bentonville, AR	Delta	3638	1:30p	G7	on time
Atlanta, GA	Delta	3598	3:20p	G4	on time	Berlin	Lufthansa	7421	3:25p		on time	Berlin	Lufthansa	7421	3:25p		on time
Atlanta, GA	DELTA	393	1:40p	E14	on time	Birmingham, AL	UNITED	5652	3:50p	F7	on time	Birmingham, AL	UNITED	5652	3:50p	F7	on time
Atlanta, GA	DELTA	1323	11:00a	E9	departed	Birmingham, AL	UNITED	3961	12:20p	F17	on time	Birmingham, AL	UNITED	3961	12:20p	F17	on time
Atlanta, GA	DELTA	1612	4:05p	E16	on time	Bismarck	Delta	2916	12:05p	K1	on time	Bismarck	Delta	2916	12:05p	K1	on time
Atlanta, GA	Delta	3679	11:45a	L8	on time	Bloomington, IL	Delta	2885	3:20p	G14A	on time	Bloomington, IL	Delta	2885	3:20p	G14A	on time

next flights in 13 seconds...

INDOOR SCREEN LED



INDOOR SCREEN LED WITH COVER



INDOOR SCREEN LED AND LUMINOUS WAYFINDING



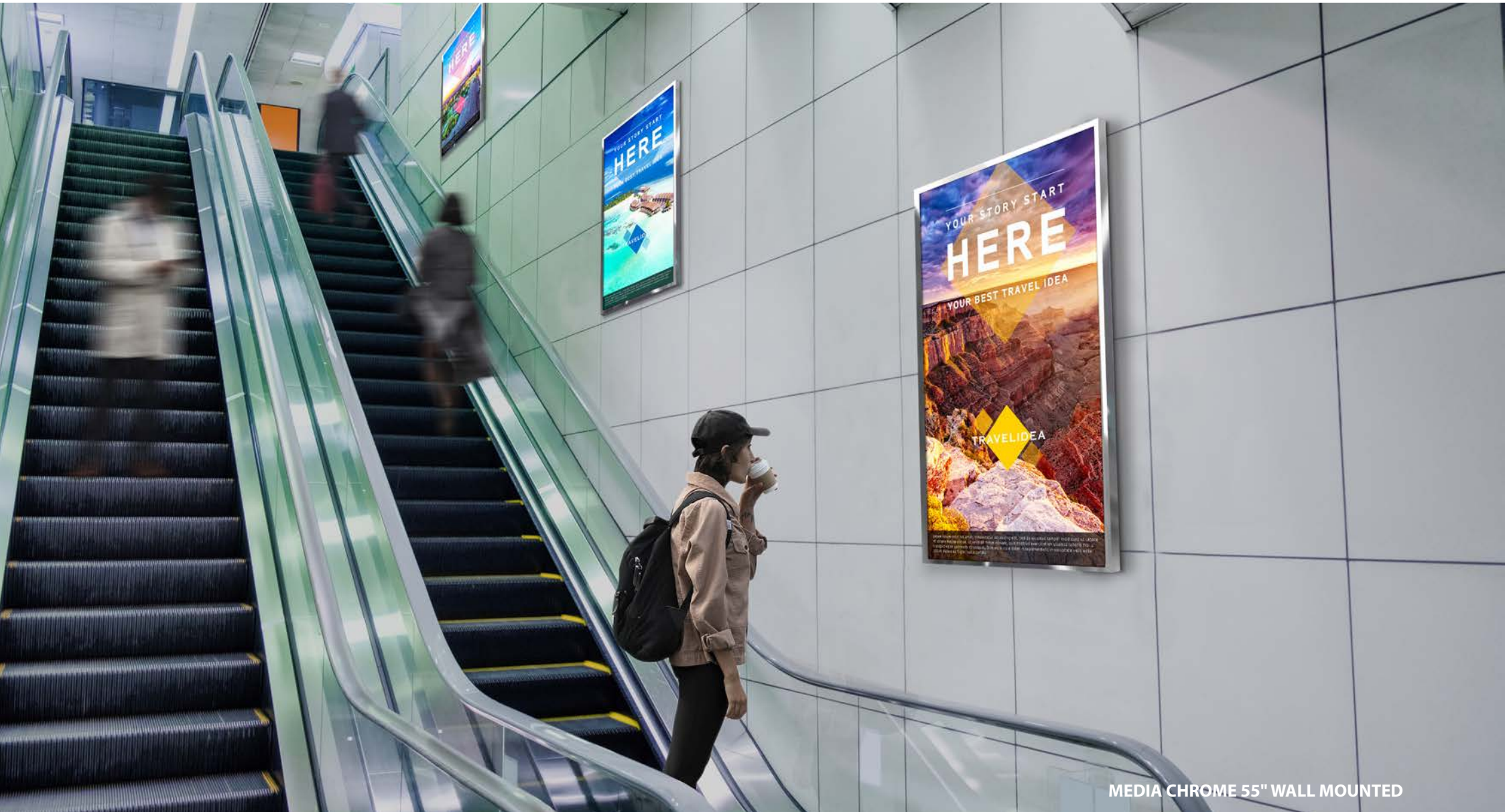
INDOOR SCREEN LED STRETCH AND MEDIA CHROME 55"



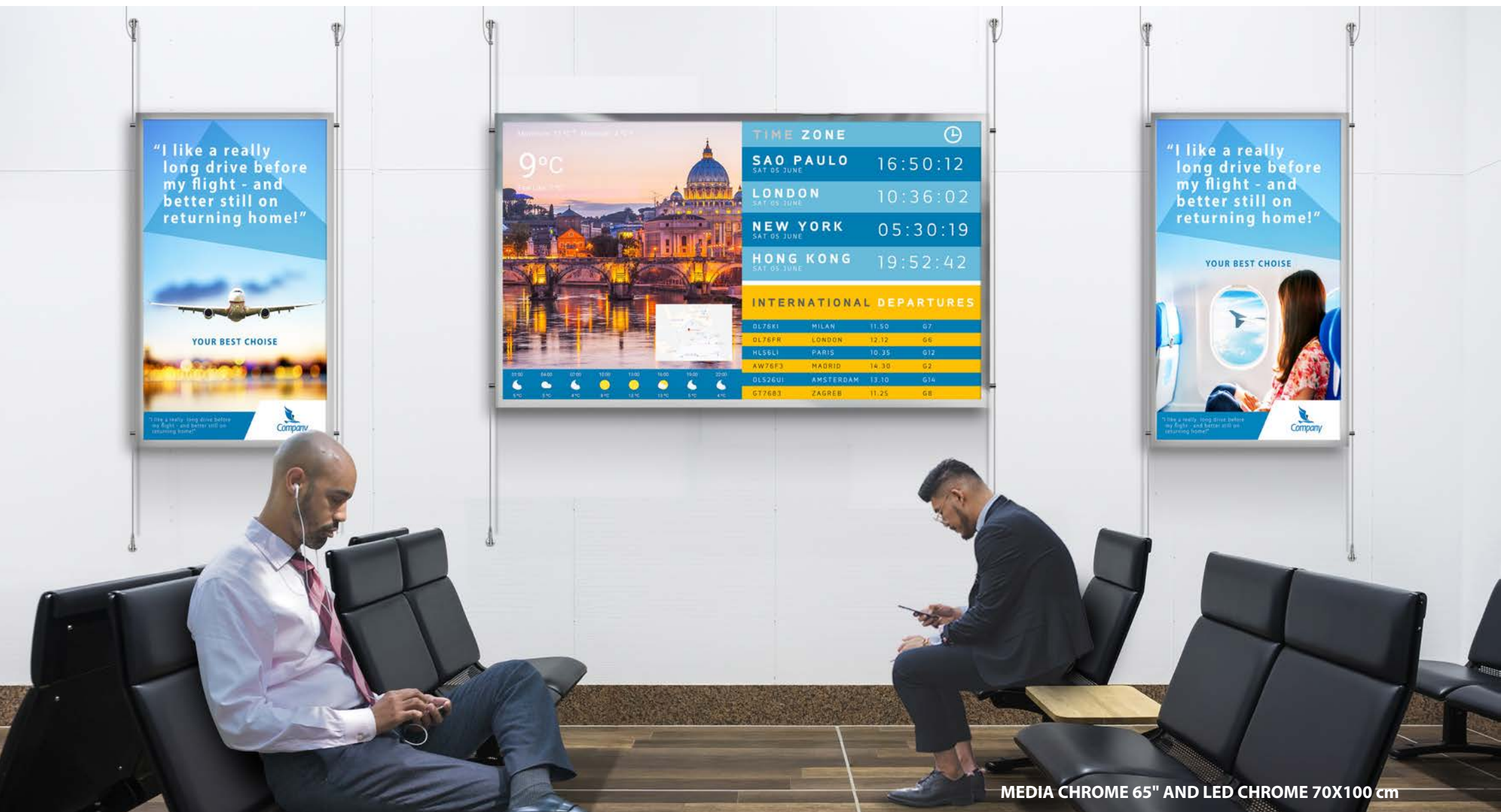
DISPLAY UNIT WITH MEDIA CHROME 55" AND SOUNDSHOWER



TOTEM INDEX 70X140 cm



MEDIA CHROME 55" WALL MOUNTED





MEDIA CHROME 49" WALL MOUNTED TOUCH



MEDIA TOTEM 55" TOUCHSCREEN



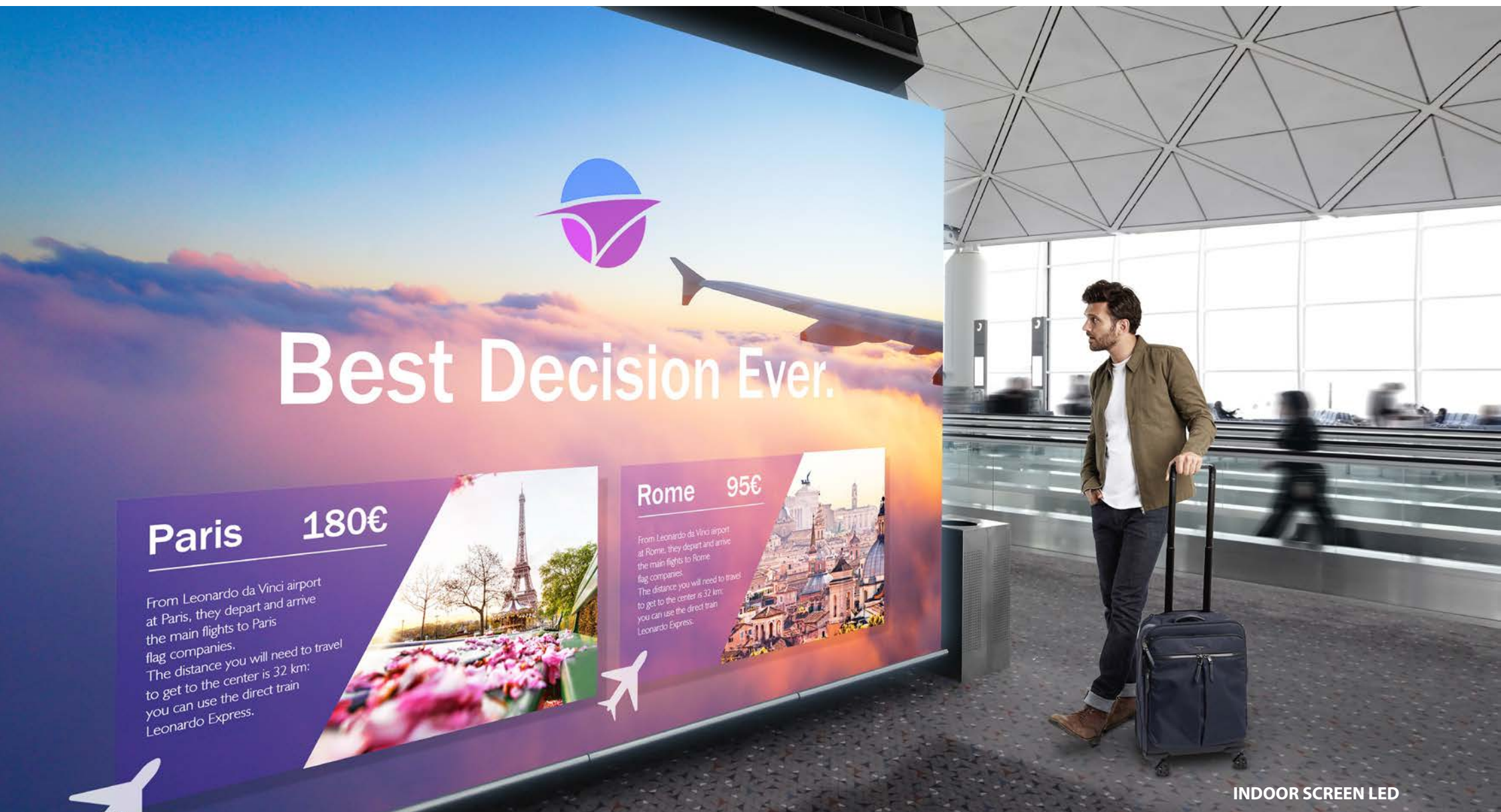
MONITOR 86" LCD ULTRASTRETCH AND TENDIFLEX SPHERE



INTERACTIVE DOOR GLASS WITH OPENING SYSTEM



VIDEOWALL 1X3 65" OLED





OUTDOOR SCREEN LED



OUTDOOR LUMINOUS TOTEM



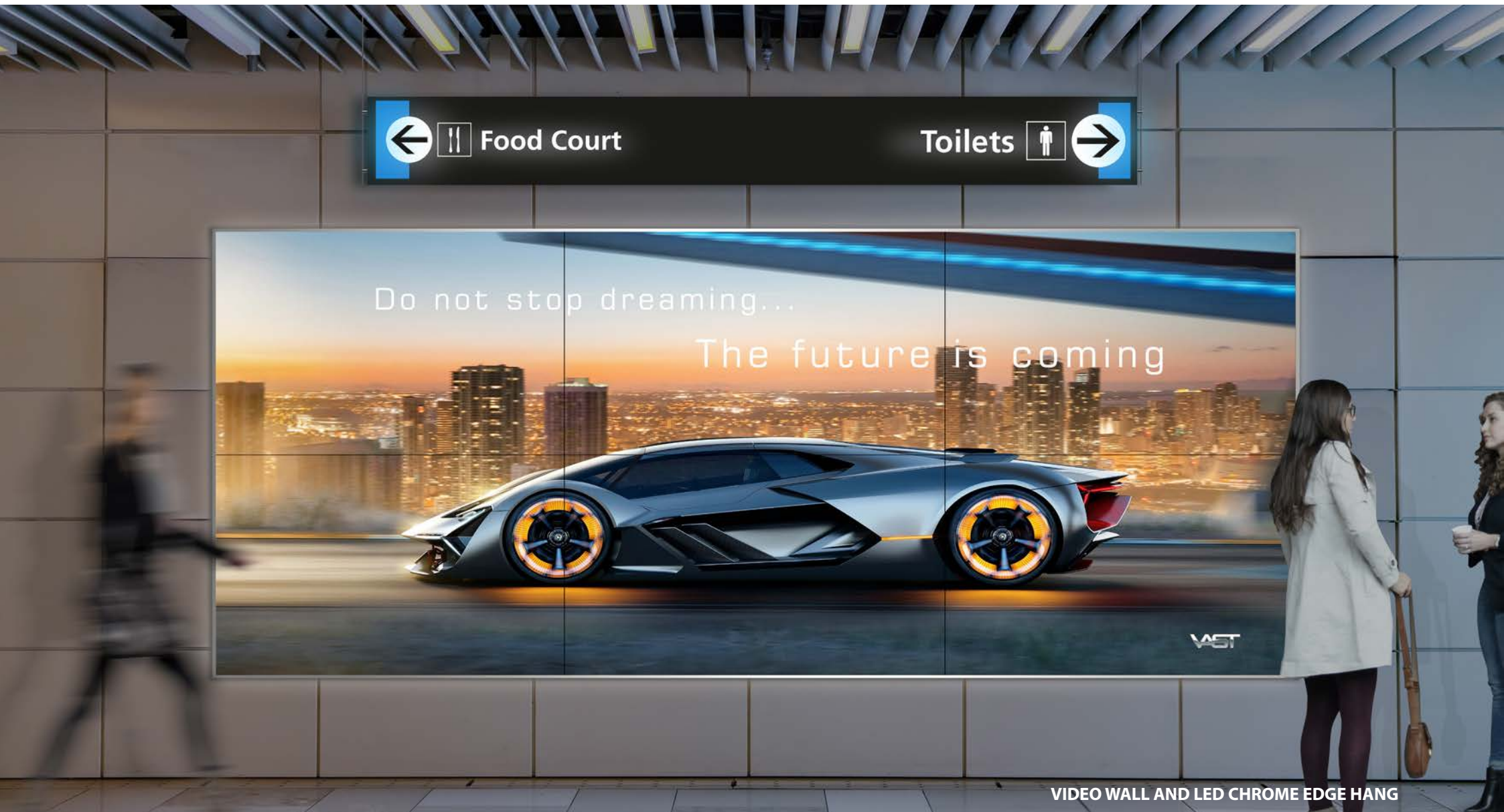
OUTDOOR SCREEN LED



INDOOR SCREEN LED



VIDEO WALL WITH BLACK GLASS COVER



VIDEO WALL AND LED CHROME EDGE HANG



INTERACTIVE KIOSK 42"



OUTDOOR DIGITAL TOTEM AND LUMINOUS WAYFINDING



INTERACTIVE SMART TOTEM

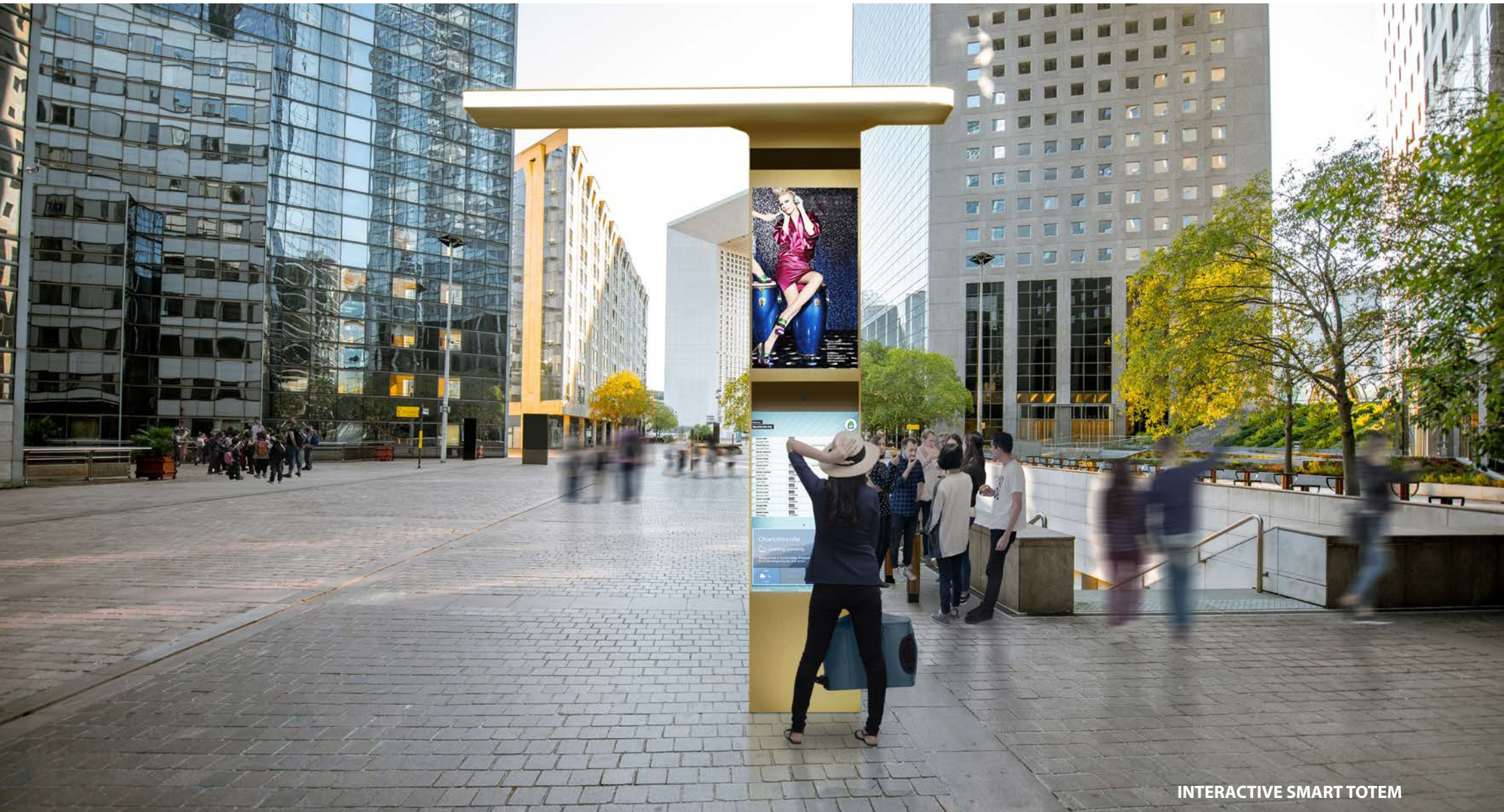




INTERACTIVE SMART TOTEM



INTERACTIVE SMART TOTEM WITH BENCH



INTERACTIVE SMART TOTEM



COLUMN RECHARGING ELECTRIC CARS



LIGHT POLES WITH DYNAMIC COMMUNICATION AND WASTE BASKETS



COLUMN RECHARGING ELECTRIC CARS



INTERACTIVE SMART TOTEM



INTERACTIVE SMART ISLAND



LIGHT POLES WITH DYNAMIC COMMUNICATION

INDOOR SCREEN LED - Ref. Pag 03



SPECIFICATION

- 7,5x2mt PITCH: 1,8;
- Resolution: 2308x288;
- Brightness: 800nits;
- Optimal viewing distance: 1 m;
- View angle O / V: 150/150;
- Average consumption: 230 W / sqm;
- Operating temperature: -10°C+ 55°C with AirConditioning System;
- Weight: 22 Kg / sqm;
- Module thickness: 45mm



MEDIA CHROME 55" - Ref. Pag 04



SPECIFICATION

- Monitor, LCD 55" with LED Backlight;
- Landscape orientation;
- 700 nits brightness;
- Screen active area 68,1x121cm;
- Resolution full HD (1920x1080 pixel);
- Life cycle 50.000 hours;
- System operation 24/7;
- Protection grade IP20 + MXP



INDOOR SCREEN LED WITH COVER - Ref. Pag 05



SPECIFICATION

- 5x1.75mt PITCH: 1.8;
- Resolution: 1920x675;
- Brightness: 800nits;
- Optimal viewing distance: 1 m;
- View angle O / V: 150/150;
- Average consumption: 230 W / sqm;
- Operating temperature: -10°C+45°C;
- Weight: 22 Kg / sqm;
- Module thickness: 45mm;
- Micro-perforated stainless steel cover. 3mm thickness. powder coating.



INDOOR SCREEN LED - Ref. Pag 06



SPECIFICATION

- 12x4mt PITCH: 3.9;
- Resolution: 2308x288;
- Brightness: 1200nits;
- Optimal viewing distance: 4 m;
- View angle O / V: 150/150;
- Average consumption: 200 W / sqm;
- Operating temperature: -10°C+45°C;
- Weight: 22 Kg / sqm;
- Module thickness: 45mm



INDOOR SCREEN LED WITH COVER - Ref. Pag 07



SPECIFICATION

- 10x5mt PITCH: 2.6;
- Resolution: 3846x1923;
- Brightness: 1000nits;
- Optimal viewing distance: 3 m;
- View angle O / V: 140/140;
- Average consumption <200 W / sqm;
- Operating temperature: 0°C+45°C;
- Weight: 30 Kg / sqm;
- Module thickness: 85mm";
- Corten Cover



INDOOR SCREEN LED AND LUMINOUS WAYFINDING - Ref. Pag 08



SPECIFICATION

- 12x2mt PITCH: 1.8;
- Resolution: 6316x1053;
- Brightness: 800nits;
- Optimal viewing distance: 2 m;
- View angle O / V: 150/150;
- Average consumption: 230 W / sqm;
- Operating temperature: 0°C+45°C;
- Weight: 22 Kg / sqm;
- Module thickness: 45mm"



INDOOR SCREEN LED STRETCH AND MEDIA CHROME 55" - Ref. Pag 09



SPECIFICATION

- 6x0.75mt PITCH: 2.6;
- Resolution: 2308x288;
- Brightness: 1000nits;
- Optimal viewing distance: 3 m;
- View angle O / V: 150/150;
- Average consumption: 230 W / sqm;
- Operating temperature: -10°C+45°C;
- Weight: 22 Kg / sqm;
- Module Thickness: 45mm



DISPLAY UNIT WITH MEDIA CHROME 55" AND SOUNDSHOWER - Ref. Pag 10



SPECIFICATION

- Display Unit;
- Mediachrome 55 "NUC + smooth frame and custom colour;
- SoundShower with proximity sensor



TOTEM INDEX 70X140 cm - Ref. Pag 11



SPECIFICATION

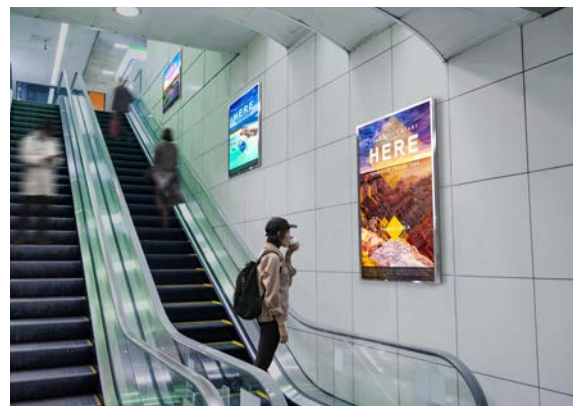
Stand alone display totem, with metallic base and message holder panel. The panel is a methacrylate sheet, thickness 5 mm.

The transparent covering is a PETG sheet thickness 1 mm with a printed silver mount.

It is joint to the panel through grey nylon clips ultrasonically welded. The ferrite rubber magnetic frame is anisotropic with different polarity.



MEDIA CHROME 55" WALL MOUNTED - Ref. Pag 12



SPECIFICATION

- Monitor, LCD 55" with LED Backlight;
- Portrait orientation;
- 700 nits brightness;
- Screen active area 68,1x121cm;
- Resolution full HD (1920x1080 pixel);
- Life cycle 50.000 hours;
- System operation 24/7;
- Protection grade IP20 + MXP



MEDIA CHROME 65" AND LED CHROME 70X100 cm - Ref. Pag 13



SPECIFICATION

- Monitor, LCD 65" with LED Backlight;
- Landscape orientation;
- 700 nits brightness;
- Screen active area 80,3x142,8cm;
- Resolution full HD (1920x1080 pixel);
- Life cycle 50.000 hours;
- System operation 24/7;
- Protection grade IP20 + NUC i5-4gb RAM -64GB SSD - Win10 IoT



MEDIA CHROME 49" WALL MOUNTED TOUCH - Ref. Pag 14



SPECIFICATION

- Monitor, LCD 49" with LED Backlight;
- Portrait orientation;
- 700 nits brightness;
- Touchscreen 40touch;
- Resolution full HD (1920x1080 pixel);
- Life cycle 50.000 hours;
- System operation 24/7;
- Protection grade IP20 + NUC i5-4gb RAM -64GB SSD - Win10 IoT



MEDIA TOTEM 55" TOUCHSCREEN - Ref. Pag 15



SPECIFICATION

- Digital Totem, LCD 55" with LED Backlight;
- Portrait orientation;
- 700 nits brightness;
- Screen active area 68,1x121cm;
- Resolution full HD (1920x1080)pixel;
- Life cycle 50.000 hours;
- System operation 24/7;
- Protection grade IP20;
- Satin stainless steel structure;
- Dimensions: 210(H)x75(W)x10(D)cm, + NUC i5-4gb RAM -64GB SSD - Win10 IoT + 40 Touches



MONITOR 86" LCD ULTRASTRETCH AND TENDIFLEX SPHERE - Ref. Pag 16



SPECIFICATION

- 86" LED IPS;
- Resolution 3840x600;
- Aspect ratio 32:9;
- 700 nits brightness;
- WebOS2.0;
- Multiscreen 4 input



INTERACTIVE DOOR GLASS WITH OPENING SYSTEM - Ref. Pag 17



SPECIFICATION

Interactive door with the monitor 65" touch screen.

The interactive door is consists of:

- Laminated glass and tempered (6+1.5+6);
- Polycarbonate film with touch sensor/microconductors;
- Player nuc5i3RYK 64G Intel NUC Kit;
- WebCam, proximity sensor



VIDEOWALL 1X3 65" OLED - Ref. Pag 18

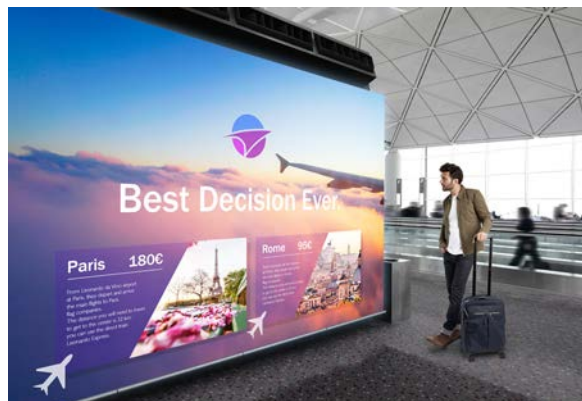


SPECIFICATION

- 1x3 65" OLED;
- Resolution 3840x2160;
- Aspect ratio 9:16;
- 400 nit brightness;
- Contrast 150000:1



INDOOR SCREEN LED - Ref. Pag 19



SPECIFICATION

- 6x2.5m PITCH: 1.2;
- Resolution: 5000x2083;
- Brightness: 600nits;
- Optimal viewing distance: 1 m;
- View angle O / V: 160/120;
- Average consumption: 250 W / sqm;
- Operating temperature: -0°C+45°C;
- Weight: 33 Kg / sqm;
- Module thickness: 40mm



OUTDOOR SCREEN LED - Ref. Pag 20



SPECIFICATION

- 4X12mt PITCH: 10;
- Resolution: 400x1200;
- Brightness: 6000nits;
- Optimal viewing distance > 8 m;
- View angle O / V: 120/120;
- Average consumption: 150 W / sqm;
- Operating temperature: -20°C+55°C;
- Weight: 40 Kg / sqm;
- Module thickness: 100mm;
- Protection F / B IP65 / IP54



OUTDOOR LUMINOUS TOTEM - Ref. Pag 21



SPECIFICATION

- Digital Totem;
- Painted aluminum structure;
- Laser cut and backlight test;
- Led illumination;
- 2 monitor 43" for information and communication;
- Integrated Player intel i5;
- Licence window 10



OUTDOOR SCREEN LED - Ref. Pag 22

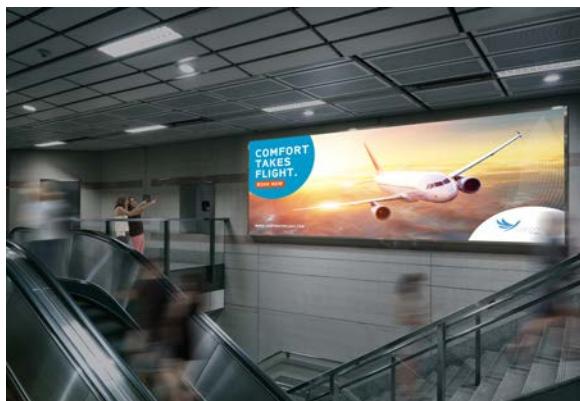


SPECIFICATION

- 5x3.75mt PITCH: 4;
- Resolution: 1250x938;
- Brightness: 5500nits;
- Optimal viewing distance: 4 m;
- View angle O / V: 140/120;
- Average consumption: 260 W / sqm;
- Operating temperature: -20°C+55°C;
- Weight: 45 Kg / sqm;
- Module thickness: 150mm;
- Protection F / B IP67 / IP67



INDOOR SCREEN LED - Ref. Pag 23



SPECIFICATION

- 7,5x3mt PITCH: 1,8;
- Resolution: 3846x1923;
- Brightness: 800 nits;
- Optimal viewing distance: 2 m;
- View angle O / V: 150/150;
- Average consumption: 230 W / sqm;
- Operating temperature: -10°C+45°C;
- Weight: 25 Kg / sqm;
- Module Thickness: 50mm



VIDEO WALL WITH BLACK GLASS COVER - Ref. Pag 24

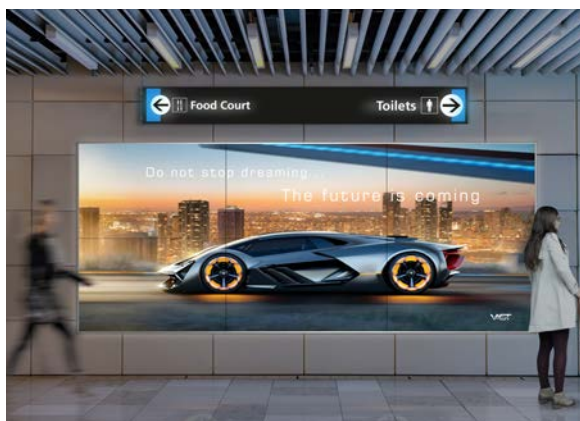


SPECIFICATION

- 3x2 55";
- 700 nits brightness;
- 1.8 Bezel;
- Push&pull Stirrups;
- Wall controller i7+8GB RAM - 250GB SSD - WIN10IoT;
- Proximity sensor;
- Touch infrared frame;
- Webcam;
- Cover



VIDEO WALL AND LED CHROME EDGE HANG - Ref. Pag 25



SPECIFICATION

- 3x2 49";
- 700 nits brightness;
- 1.8 Bezel;
- Push&pull Stirrups;
- Wall controller i7+8GB RAM - 250GB SSD - WIN10IoT;
- Proximity sensor



INTERACTIVE KIOSK 42" - Ref. Pag 26



SPECIFICATION

- Display size 42";
- Active area 93, 1 x52,4 cm;
- Resolution 1920x1080 px;
- Aspect ratio wide 16:9;
- Max brightness 360 cd/m2;
- Contrast 1000:1 (typ);
- Viewing angle 178°/178°;
- Optimal brightness duration 50.000 h;
- Width 107cm Height 120cm;
- IRtouchscreen 10 touches



OUTDOOR DIGITAL TOTEM AND LUMINOUS WAYFINDING - Ref. Pag 27



SPECIFICATION

- Digital TOTEM 55";
- Painted aluminum structure;
- 2 monitor 55" double sided with air conditional;
- Integrated wifi;
- Integrated Player;
- Licence window 10;
- Wayfinding Signage;
- Painted aluminum structure;
- Laser cut and backlight test;
- Led illumination



INTERACTIVE SMART TOTEM - Ref. Pag 28



SPECIFICATION

- Interactive smart totem;
- Painted aluminum structure;
- Led illumination;
- 2 monitor 55" and 1 monitor 55" touchscreen (40 touch);
- Wifi hot spot;
- Integrated Player intel i5;
- Security Cam;
- USB device charging;
- Facial Reader; Sound shower;
- Motion sensor; Licence window 10



WAYFINDING POLE FOR DYNAMIC SIGN AND AUTOMATIC BOLLARDS - Ref. Pag 29



SPECIFICATION

- Wayfinding poles for dynamic sign;
- Painted aluminum structure;
- Led illumination;
- 4 monitor 37" stretch;
- Integrated Player intel i5;
- Licence window 10



INTERACTIVE SMART TOTEM - Ref. Pag 30



SPECIFICATION

- Interactive smart totem;
- Painted aluminum structure;
- Led illumination;
- 2 monitor 55" and 1 monitor 55" touchscreen (40 touch);
- Wifi hot spot;
- Integrated Player intel i5;
- Security Cam;
- USB device charging;
- Facial Reader; Sound shower;
- Motion sensor; Licence window 10



INTERACTIVE SMART TOTEM WITH BENCH - Ref. Pag 31



SPECIFICATION

- Interactive smart totem with bench;
- Painted aluminum structure;
- Led illumination;
- 1 monitor 55" touchscreen (40 touch);
- Wifi hot spot;
- Integrated Player intel i5;
- USB device charging;
- Facial Reader;
- Motion sensor;
- Sound shower; Licence window 10



OUTDOOR DIGITAL TOTEM - Ref. Pag 32



SPECIFICATION

- Interactive smart totem;
- Painted aluminum structure;
- Led illumination;
- 2 monitor 55" and 1 monitor 55" touchscreen (40 touch);
- Wifi hot spot;
- Integrated Player intel i5;
- Security Cam;
- USB device charging;
- Facial Reader; Sound shower;
- Motion sensor; Licence window 10



COLUMN RECHARGING ELECTRIC CARS - Ref. Pag 33



SPECIFICATION

- Columns for electric car charging;
- Painted aluminum structure;
- Led illumination;
- 1 monitor 65";
- Monitor 12"



LIGHT POLES WITH DYNAMIC COMMUNICATION AND WASTE BASKETS - Ref. Pag 34



SPECIFICATION

- Painted aluminum structure;
- Led illumination;
- 2 monitor 65";
- Wifi hot spot;
- Integrated Player intel i5 - Router Gateway Radio;
- Licence window 10;

WASTE BASKETS

- Waste basket - smart;
- Painted aluminum structure;
- Waste level detection;
- Informs the control room that the bin should be emptied;
- Led illumination



COLUMN RECHARGING ELECTRIC CARS - Ref. Pag 35



SPECIFICATION

- Columns for electric car charging;
- Painted aluminum structure;
- Led illumination;
- 1 monitor 65";
- Monitor 12"



OUTDOOR DIGITAL TOTEM - Ref. Pag 36



SPECIFICATION

- Interactive smart totem;
- Painted aluminum structure;
- Led illumination;
- 2 monitor 55" and 1 monitor 55" touchscreen (40 touch);
- Wifi hot spot;
- Integrated Player intel i5;
- Security Cam;
- USB device charging;
- Facial Reader; Sound shower;
- Motion sensor; Licence window 10



INTERACTIVE SMART ISLAND - Ref. Pag 37



SPECIFICATION

- Interactive smart Island;
- Painted aluminum structure;
- Led illumination;
- Wifi hot spot;
- Integrated Player;
- USB device charging;
- Sound shower



LIGHT POLES WITH DYNAMIC COMMUNICATION - Ref. Pag 38



SPECIFICATION

- Painted aluminum structure;
- Led illumination;
- 2 monitor 65";
- Wifi hot spot;
- Integrated Player intel i5 - Router Gateway Radio;
- Licence window 10;





FLEX s.r.l.

Via G. Bargnani, 11

25135 Brescia (BS) - Italy

Phone +39 030 35.310.05

Fax +39 030 35.310.22

www.flex.it - info@flex.it